

Remote Ham Radio {dot} com

November, 2015

CQ DX!

Welcome to the Autumn 2015 Edition of the RemoteHamRadio Newsletter. November is here and we have a lot of good stuff coming your way this DX season!



W2/Summit sitting at 2200' in the Catskill Mountains!

Youth of the Month

Marty KC1CWF recipient of the November 2015 Youth of the Month!

Bio:

"Hello,

My name is Marty Sullaway, KC1CWF. I was recently reading about your youth program, and was curious about it. I am 13 years old and was licensed a year ago. I love contesting and DXing, and just earned DXCC and WAS. I am on the board of the Clay Center Amateur Radio Club, a youth radio club at a local school, and love helping kids learn about ham radio. In fall, 2015 I founded the Eastern Massachusetts Contesting Club, KC1ENE. The club's goal is to get more youth involved and interested in contesting".



Marty KC1CWF @ ARRL HQ Station

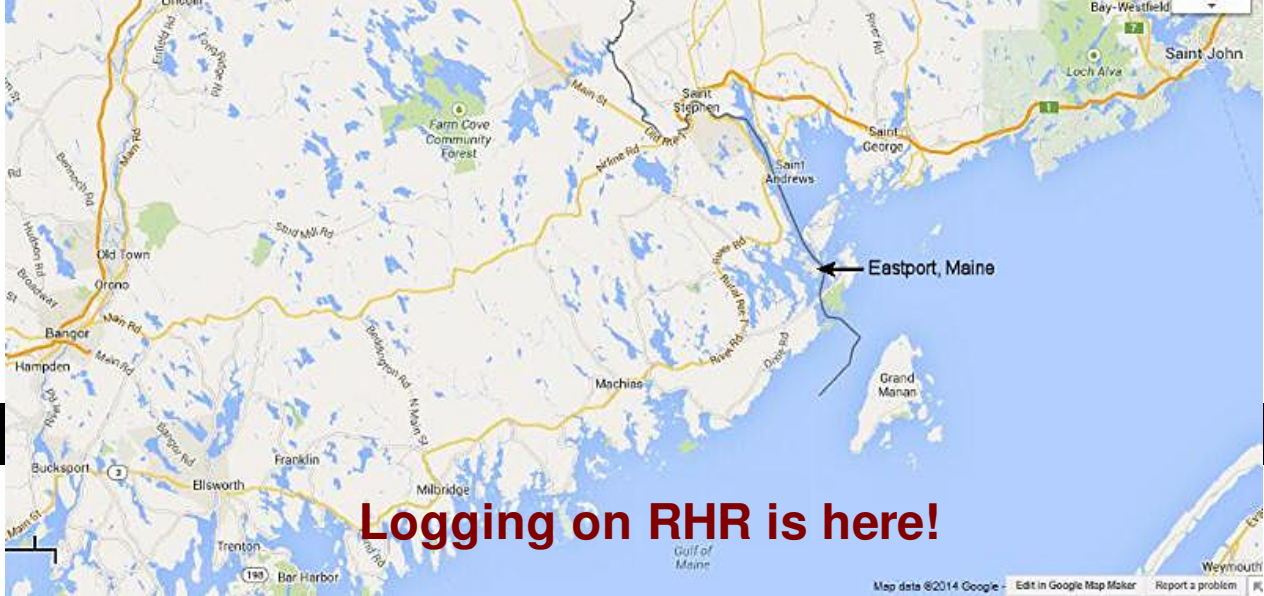
RemoteHamRadio's Youth program is a one-year program that includes 300 minutes per month and is completely free to the recipient. RHR will announce a new recipient typically every month. If you are interested in supporting this program you can contact us for details.

New Maine Site!

W1/Eastport

We are very excited to announce our newest addition to the RHR station lineup. With 63 beautiful flat and cleared acres, we have some pretty crazy plans for this QTH! We believe that this specific station is the closest U.S. amateur radio station to the European continent. Operating with virtually no man made noise floor is an absolute pleasure to experience.





The DNA of RHR was to reinvent the way radio operators experience the hobby. We wanted to take an old hobby and make it new again. The first thing we delivered was a high quality service coupled with intuitive station control technology that did not require a software download. We then engineered the ability to operate both SSB and CW directly inside a web browser with no additional hardware or software, we called this WebDX. We are now proud to show you how we feel the world of logging is going to be changed from this point forward.

The initial integrated logging functionality may seem basic to the eye but under the covers, complex calculations are being performed. For starters, when you power on a station we handle all the station data for you in that log entry. For instance, If you log a QSO from W2/Summit, that log entry will be auto populated with the Frequency, Band, Mode, State, Grid Square, Country and zones, all automagically. How many hours or perhaps days have you lost attempting to setup LOTW with your favorite logging program? Have many times have you given up, some of you may have simply walked away and never finished the setup. Those days are all over now with the RHR integrated logger. You simply upload your .p12 certificate from within you account page and we take care of uploading every QSO correctly signed for you! Yes its that simple.

This is our first "beta" rollout of what we feel is going to change the future of logging. The features are very basic today but that won't be the case in the future. We will be adding amazing new features and functions from this point forward.

W1/Calais W1/Eastport W2/Summit W2/Summit160 W2/Blueberry **W4/Atlanta** W6/Murrieta W7/Tacoma W7/Portland
 W2/Quaker W2/Windham W2/Monticello W2/Taconic W1/Danbury W6/SanJose TF/IcelandRX

5 Element mono Yagi @ 115' on 200' Rotating Tower

134° 15m

HI3TEJ

GO

STOP

LP



EU

AF

SA

PAC

JA

DX - DE W2RE

21,026.0 CW BETA

CALLSIGN

HI3TEJ

SENT

599

RCVD

599

NOTES

Station Status

v73

\$0.49/min

WEBDX

IN USE BY W2RE

2m 18s

SITE IN BETA NEW: WARC ADDED 7/1
 Georgia Grid: EM73 1000' ASL APRIL GA
 Lamar County ITU 8 QGZ 5



11:40 / 23:03

Power Off

-

Config Station

+

1KW Solid State Amplifier

ALARM

0 W

OPERATE

1.0

Elecraft K3

VOX RX

21.026.000+

21.265.000

15m

CW

FAST

A → B

A → B

SPLIT

S2

Real-time CW (ESC to cancel)

Macros

CQ DX CQ D...

5NN ME TU

TU

CQDX DE N...

-

PTT (CTRL KEY)

PRE

ATT

SUB

More

40

UTC	Callsign	Band	kHz	Mode	Station	Sent	Rcvd	Logbook
2015-10-15 14:17:09 UTC	HI3TEJ	15m	21,026.0	CW	W4/Atlanta	599	599	DX
2015-10-15 14:13:01 UTC	R2015NN	17m	18,085.0	CW	W2/Summit	599	599	DX
2015-10-14 20:24:17 UTC	FW5JJ	17m	18,070.7	CW	W6/Murrieta	599	599	DX
2015-10-14 20:15:05 UTC	V73D	17m	18,085.8	CW	W1/Eastport	599	599	DX
2015-10-14 20:05:02 UTC	S79SP	20m	14,015.0	CW	W1/Eastport	599	599	DX
2015-10-14 15:57:50 UTC	SV1KYC	17m	18,135.0	USB	W1/Eastport	55	56	DX
2015-10-14 15:57:22 UTC	IZ1JLG	17m	18,135.0	USB	W1/Eastport	59	59	DX
2015-10-14 15:56:38 UTC	IK0VSY	17m	18,135.0	USB	W1/Eastport	59	57	DX
2015-10-14 15:55:52 UTC	EA4YW	17m	18,135.0	USB	W1/Eastport	59	59	DX
2015-10-14 15:55:04 UTC	IZ0CBO	17m	18,135.0	USB	W1/Eastport	59	59	DX
2015-10-14 15:51:52 UTC	KE0MPH	15m	21,300.0	USB	W1/Eastport	59	59	DX
2015-10-14 15:50:04 UTC	K5WLT	15m	21,300.0	USB	W1/Eastport	59	59	DX
2015-10-14 15:48:29 UTC	N9NDI	15m	21,300.0	USB	W1/Eastport	59	59	DX
2015-10-14 15:46:29 UTC	KB1Z	15m	21,300.0	USB	KP4/Palmas	59	59	KP4 Puerto Rico
2015-10-14 15:44:59 UTC	KB2IAU	15m	21,300.0	USB	KP4/Palmas	59	59	KP4 Puerto Rico

W2RE Logbook - Notice each QSO is marked with the station operated.

W2/Quaker

The RHR team built and installed new antennas @ W2/Quaker. RemoteDX Site.

New antennas are Duo-
bander GXP 2EL 30/40M
yagi @ 85' and a GXP 5B
4EL multiband yagi @
75'.



GXP Duobander 30/40.



GXP 5B 4L Multiband Yagi





The RHR Team installing the GXP 30/40

W1/Calais

New 80M 4SQ Array

Wow! This site keeps getting better and better and we are not stopping here! A newly engineered and erected full size 80m four square is now in full operation. A user recently reported working a mobile user in central Europe with a simple whip antenna with Q5 copy in both directions on 80m with the new antenna! Stay tuned, we have a number of other additions in the works at this site as well.



W1/Calais Maine sitting 200' above the Bay of Fundy

W2/Summit160

It's that time of year again, we have the dedicated top band station up and running. This 1.5KW connected to a 160m four square sitting at 2300'ASL is simply a flame thrower into the Europe. The QRO + the gain of the array produces approximately 5KW of ERP that you can point in four directions. The leaves fall early in summit!



QRO Power on 160M with 4SQ array at 2200' ASL



Contest Rentals

- ✓ Mountaintop Stations
- ✓ Oceanside Stations
- ✓ No QRN
- ✓ Big Stacks
- ✓ 1KW Solid State Amplifiers
- ✓ Four-Squares on 80m and 160m
- ✓ Full Station Automation
- ✓ Use Your Favorite Logging Software
- ✓ Operate From Home
- ✓ Save on Airfare
- ✓ No Hardware Required

Few Examples of the 18 stations available on RHR for contesting!



W1/Eastport - Low Tide on the Bay of Fundy!



**W1/Calais (Sitting 200' above Bay of Fundy)
Incredible takeoff over the sea toward Europe!**



W2/Summit (2100' ASL on its own mountain) Very quiet QTH with incredible takeoff in all directions. Enjoy your very own mountaintop QTH on RHR!

Contest Rentals

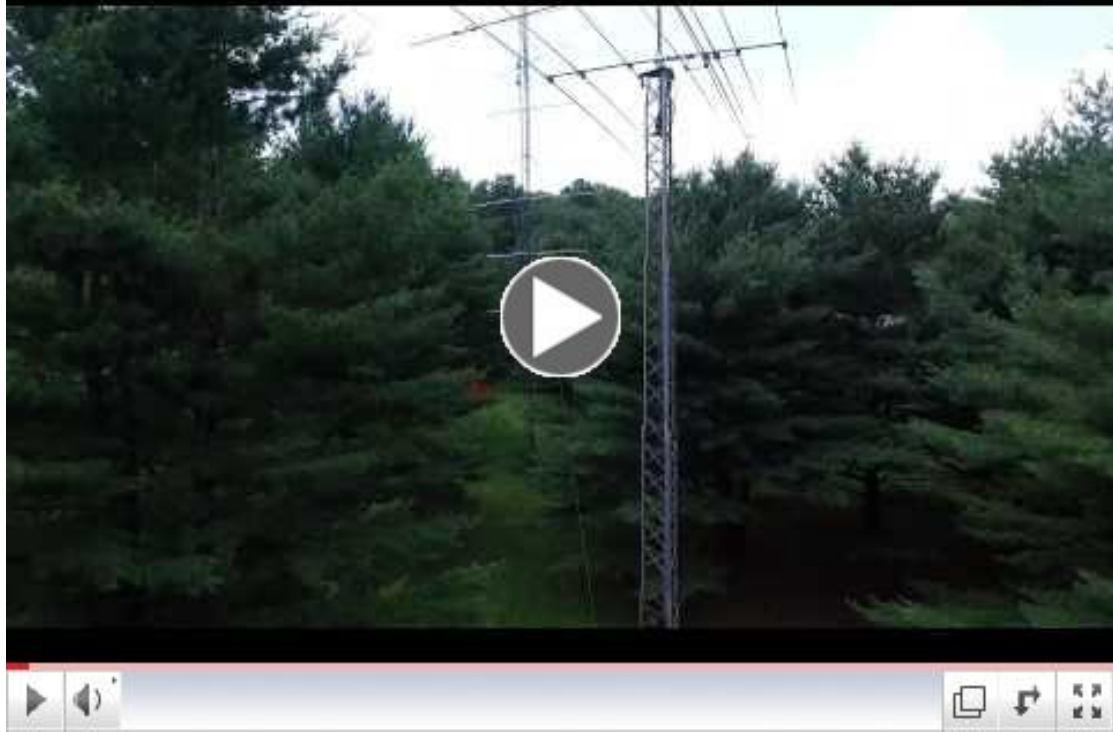
Now booking sites! Contact us for details!

RemoteHamRadio is now accepting bookings for contest rentals. With the large number of world-class stations on the network, we can now start taking bookings for any contest on the calendar. If you would like to book a contest here is a list of what to expect.

- \$99/Yr membership to apply.
- RHR PremiumDX members receive a discounted rate.
- You must book the site for the entire contest period.
- You will only have access to the site during the contest period.
- Operate CW, SSB and Digital modes.
- We can optionally ship a complete K3/0 setup for lease during the contest.
- Operate a world class station from the comfort of your own home.
- RHR-Helper allows contesting via WebDX!
- [Contact us for details](#)

Video of the Month

Description of the W2/Monticello site taken with DJI Phantom 3 Pro.



Is your station ready for DX season?



Because our 18 are.

RemoteHamRadio.com

888-675-8035

**Registration
is easy!**

Just fill out the signup form and you will be on
the air today.

The only requirement is that you hold a valid
(USA) FCC amateur radio callsign. Must be
General class or above.



Sign up and send us a copy of your valid FCC licence today and the RHR team will send the login credentials to you within 30 minutes.

What are you waiting for? The first 30 minutes are on us!



[Start working DX Today](#)

If you would like to read a review done by *QST*, [Please check out this article.](#)

TNX 73 GL DX,

The RHR Team

888-675-8035

[Join Our Mailing List!](#)

[Forward to a Friend](#)

RemoteHamRadio.com | service@remotehamradio.com

Copyright © 2015. Hudson Valley Towers, Inc. All Rights Reserved.